

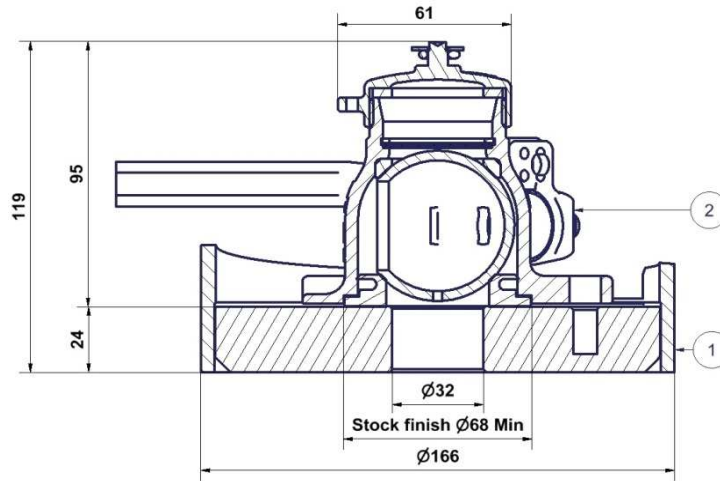
1"1/2 (ND32) ATCO™ Airline BSP threaded ball valve - AD3X

INSTALLATION

Assembly

To install the ND32 ATCO™, the tank pad must be machined with spiral groove (serrated surface).

1. Make sure there is no dirt or grit on the tank pad and gasket.
 2. Install the valve on the tank pad with handle in closed position.
 3. Install the 4 screws and washers.
- Tightening torque required : 3 daN.m
4. Open and close the valve 3 times before operating to mark the PTFE seals.



Item	Description	Specification	Part n°
	Weld-in flange	int ø 32 mm, ext ø 127 mm thickness 22mm 4xM10x103.5PCD 316L stainless steel	11 90 20 00 00
1	Recess flange	int ø 32 mm, ext ø 166 mm 4xM10x 103.5PCD - PTFE min thickness 23.5mm, max thickness 46mm	11 91 12 00 00
2	ND32 ATCO ball valve	ND32 Ball valve 4xø11x103.5PCD	AD3X7T21CS21
	Screw kit	4 x M10 -25 screws, 4 x grower washers	12 91 99 00 00
	Pressure gauge	0-6 bar - bottom entry 1/4" BSP full stainless steel	70 18 06 00 95
	Pressure gauge	0-6 bar - bottom entry 1/4" BSP St. st. case, brass internals & connection	70 21 02 00 22