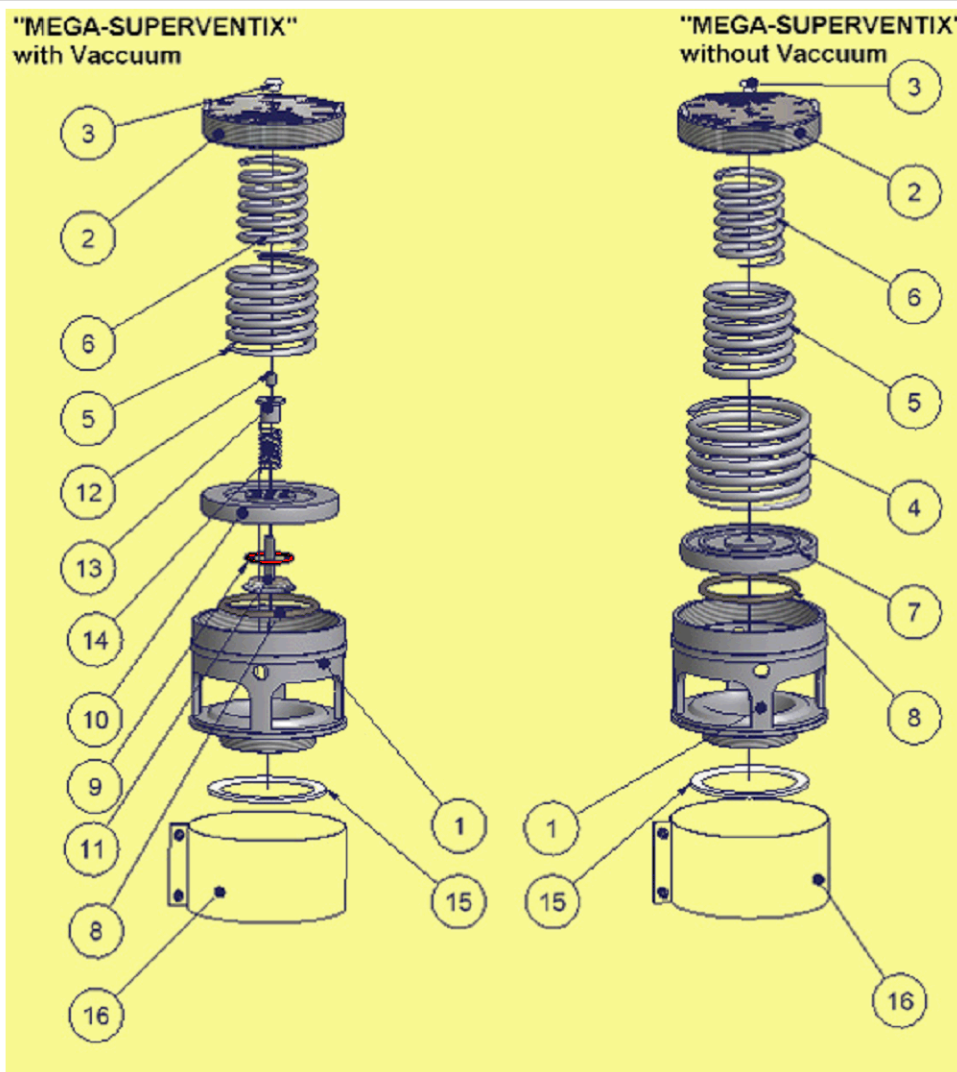


# 2 1/2" "Méga-SUPERVENTIX"<sup>TM</sup> safety relief valve

## Maintenance sheet

2"1.2 "Méga-SUPERVENTIX"<sup>TM</sup>  
safety relief valve



### MAINTENANCE KIT

ITEM	DESIGNATION	CODE
8-9	Seal pressure/vacuum	11 10 01 91 00
8	Pressure seal	11 10 01 99 05
15	10 setting gaskets composite / PTFE	11 10 01 92 00
15	Setting gasket rubber / PTFE	11 10 01 93 00
16	Gauze kit (before November 2003)	11 10 01 30 91
16	Gauze kit (after November 2003)	11 10 01 50 91
5	Spring set pressure 218 kPa	11 10 01 95 00
5	Spring set pressure 330 kPa	12 12 84 90 00
5-6	Spring set pressure 375 kPa	11 10 01 96 00
5-6	Spring set pressure 440 kPa	11 10 01 97 00
4-5-6	Spring set pressure 660 kPa	11 10 20 90 00
14	Spring vacuum 21 kPa	11 10 01 98 00
10	Pressure plate pressure / vacuum PED pressure less 660 kPa	11 10 01 99 00
7	Pressure plate pressure only PED pressure less 660 kPa	11 10 01 99 01
11	Vacuum poppet PED	11 10 01 99 02
1	Body	11 10 01 99 03
2	Cover	11 10 01 99 04