

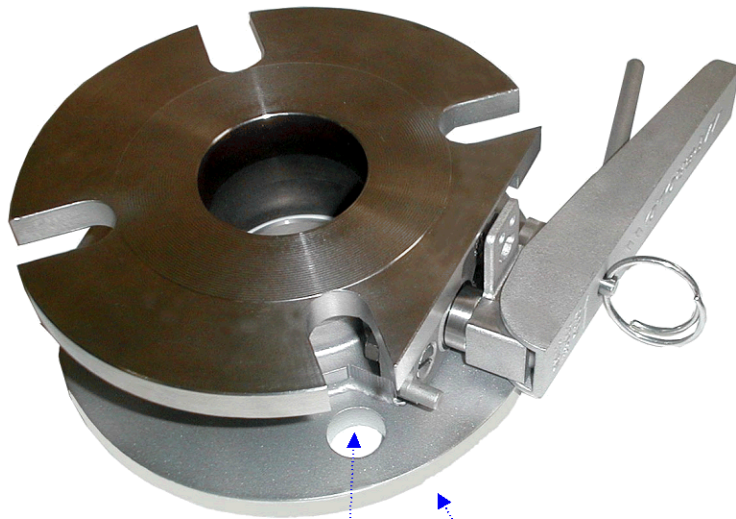
# "TANKFLY"™ 2" flanged air inlet butterfly valve MAINTENANCE SHEET

## FITTING AND ADJUSTING THE VALVE ON THE CONTAINER

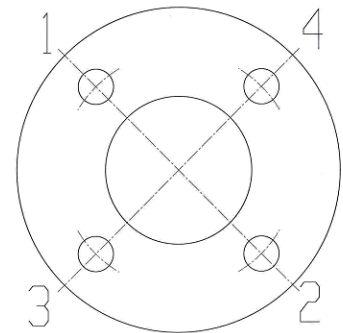
**CAUTION :**

**BUTTERFLY MUST BE CLOSED WHEN VALVE IS INSTALLED ON THE FLANGE**

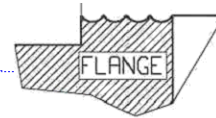
Place the valve on the tank pad (be sure there is no defect on the tank pad and tighten to a torque of 3 daN.m).



Tightening sequence



MINIMUM STOCK FINISH  $\varnothing 75$



The recommended screws to install the valve on its flange are M 16 x 30 hexagon socket head cap screw.



**If opening or closing torque is too soft or too hard, move the sleeve by unscrewing the fixing screw, and then screw again, until required torque is reached**