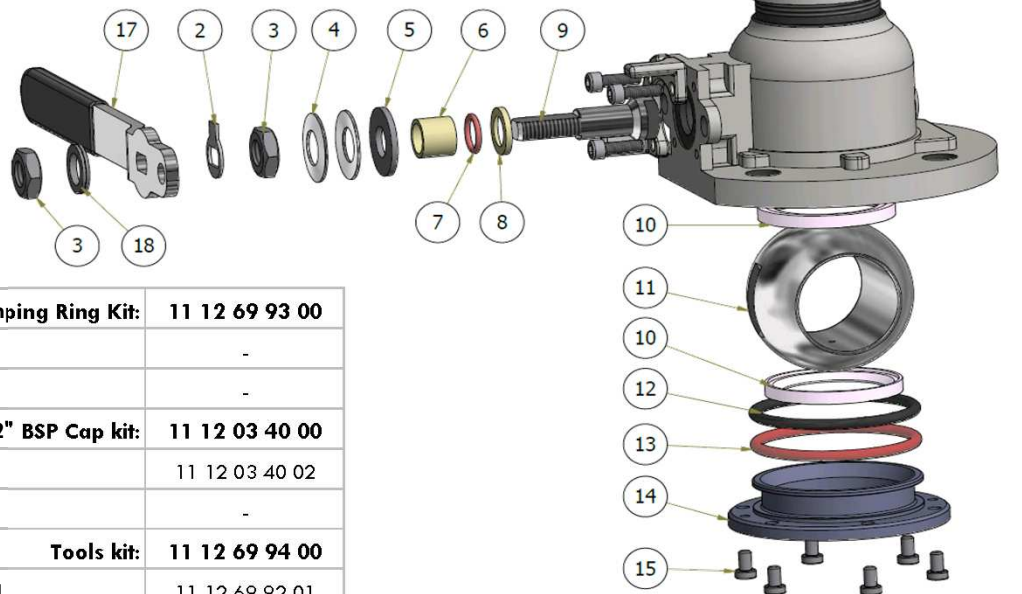
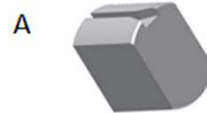


MAINTENANCE

ITEM	QTY	DESIGNATION	PART N°	
			Standard	High Temp
Ball seals kit:			11 12 42 92 00	on request
10	2	Ball Seals (PTFE or PEEK)	11 12 39 00 09	11 12 39 00 28
12	1	O'Ring (FEP (or PFA for HT))	70 10 15 00 10	70 10 17 00 40
13	1	O'Ring (Viton (or PFA for HT))	70 10 01 02 39	70 10 17 00 40
Ball kit:			11 12 42 91 00	
11	1	Ball (316)	11 12 42 00 11	
Handle kit:			11 14 16 92 00	
17	1	Handle (st st)	-	
	1	Handle cap, nitrile	-	
3	2	M16 Nut	-	
2	1	Stop washer	-	
18	1	Washer Nordlock Ø 16	-	
Spindle seals kit:			11 12 42 93 00	
6	1	Bearing Bush (PTFE)	11 12 39 00 14	
7	1	O'Ring (FEP/silicone)	70 10 15 00 12	
8	1	Spindle Gasket	11 12 39 00 21	
Spindle kit:			11 14 16 91 00	
9	1	Spindle (St st)	11 12 39 00 16	
4	2	Elastic washer (St st)	-	
5	1	Washer (St st)	-	
3	2	M16 Nut	-	
2	1	Stop washer	-	
18	1	Washer Nordlock Ø 16	-	

Nb Perolo recommends :

- The spindle seals should be changed simultaneously to maintain the ball valve spindle perfectly tight.
- Both ball gaskets should be changed
- Valve should be in closed position during installation



Clamping Ring Kit:			11 12 69 93 00
15	6	TBHC Screw	-
14	1	Clamping Ring (St st)	-
2" BSP Cap kit:			11 12 03 40 00
-	1	Cap Seal	11 12 03 40 02
-	1	BSP Cap & Chain	-
Tools kit:			11 12 69 94 00
A	1	Spindle Assembly tool	11 12 69 92 01
B	1	O'Ring Assembly tool	11 12 69 92 02