

INSTALLATION

1. Disassemble the bolts with the screw
2. Weld the neckring on the tank.

TIG, MIG or MAG weld process are allowed. Check the material according to your tank and welding process.

3. **Check that the sealing surface has no more than 1 mm flatness default.**

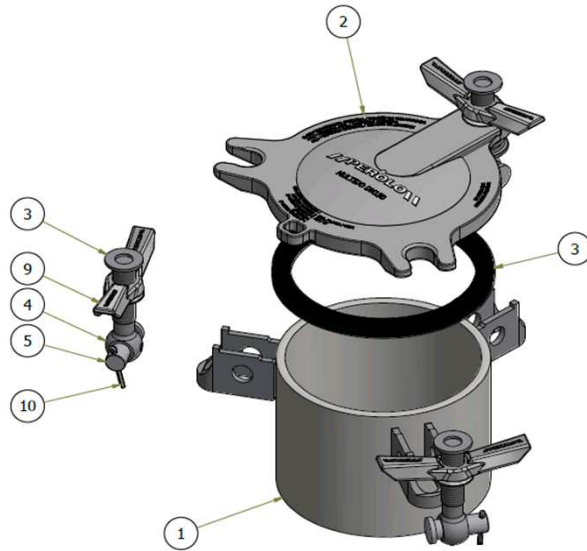
4. Assemble the cover and the security bolt. Assemble the 2 standard bolts.

NB: the tank radius should be +/- 50mm compared to neckring radius in order to allow correct neckring welding on the tank.

MAINTENANCE

ITEM	QTY	DESIGNATION	PART N°
Coverlid, Neckring & seal*			
2	1	ND150 Coverlid, st st	11 18 94 10 02
1	1	Neckring, H 120mm, st st	11 13 91 10 00
3	1	Coverlid seal, black nitrile	11 13 91 10 02
Swingbolt assembly & spring			
7	1	Spring, st st	17 10 06 00 08
3,9,4,5,10	1	Swingbolt assembly (1x eye bolt 83mm, 1x wing nut, 1x pivot pin, 1x split pin 1x washer)	11 18 94 92 00

*for other seal material, please contact our sales department



ITEM	QTY	DESIGNATION	PART N°
Coverlid kit			
3	1	1 x 10x14, Black nitrile seal	11 18 94 91 00
2	1	1 x ND150 coverlid, st st	
4	3	3 x eye bolts, M18 Ø16 L83, st st	
5	3	3 x pivot pins, st st	
9	3	3 x wing nuts, copper alloy	
6	1	1 x washer	
7	1	1 x spring	
8	3	3 x washer st st	
10	3	3 x split pin st st	

