

5" / 4" Rail tank car footvalve

Footvalve
2 cables version



The Perolo 4" Rail tank car footvalve is designed to be used as a bottom discharge. It is manually operated by the bilateral rail control and by the cable attached to the DMA aeration valve.

SPECIFICATION	
Nominal diameter	100mm (4")
Weight	34,1 Kg
Inlet flange	8x Ø18 on a 180 PCD (external FV)
Outlet flange	8x Ø18 on a 180 PCD (external FV)
Working pressure	3 bar
Test pressure	4,5 bar
Working temperature	-40° to +190 °C stainless steel -40° to +150° C carbon steel

OPTIONS	
Sealing	On bilateral control
Steam heating	With or without

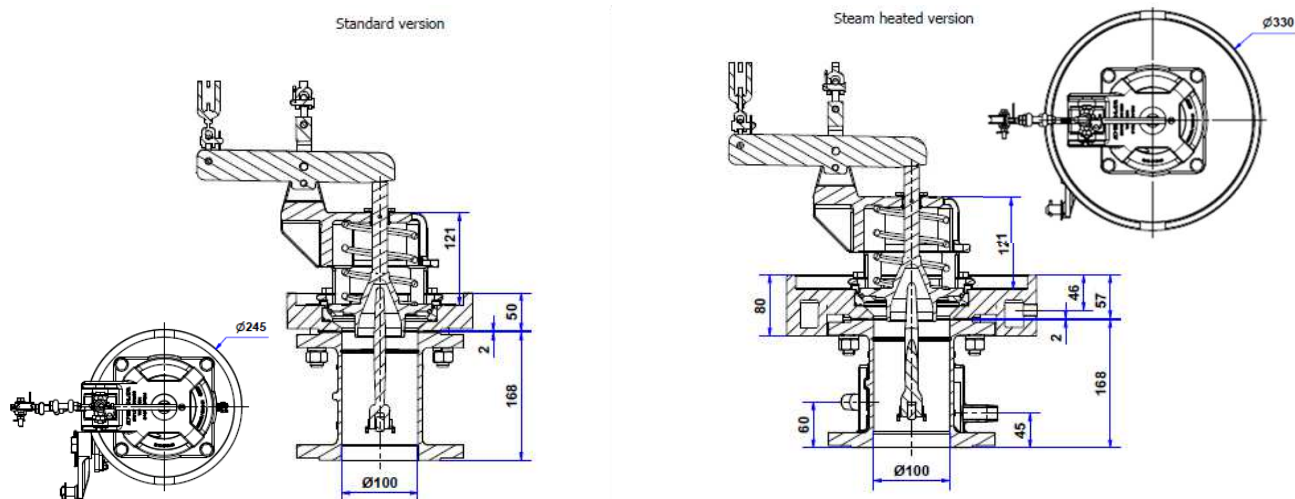
CONFORMITY & CERTIFICATION	
EN 14433 / EN 12561-2 / EN 12663-2 / EN 61373	
Approved by: Bureau Veritas / A-C-I	

ACCESSORIES	
Opening cable Ø4	19 11 26 41 00
Safety cable Ø8	19 11 26 42 00
PTFE Flat gasket	19 90 05 30 01
Stud kit	19 11 09 90 01
Gauze	19 11 37 21 00
Gauze for fabricated FV	19 11 26 60 00

STANDARD FEATURES (See Codification for option)	
Made of (material)	Carbon Steel or 316/CF8M/1.4408 or 304/CF8/1.4308 - Other on request.
Body length	170mm (external FV)
O'rings material	FEP/Silicone - Viton
Guiding material	PTFE
Operating	Manually with bilateral control.

CODIFICATION		
Internal footvalve 1911370000 St st - Fep/Si 1911560000 St st & carbon steel - PFA/Si for steam heating	Weld-in flange 1911265000 Carbon St 1911261000 Carbon st Steam heated 1911310001 304L St st	External footvalve 1911092000 Carbon St 1911310000 304 St st 1911620000 Wetted parts 316/316L 1911580000 St st with steam heating

DIMENSIONAL DRAWING



Due to our policy of continuous product improvement, specifications may change without notice - Specification sheet PWA 19 11 37 20 00 B

It is the customer's responsibility to check the compatibility between valves material and transported product.

PEROLO SAS, 69 Rue des Maçons, 33390 Blaye, FRANCE -Phone : + 33 (0)5 5742 67 00 - Email : sales@perolo.com

BOTTOM DISCHARGE