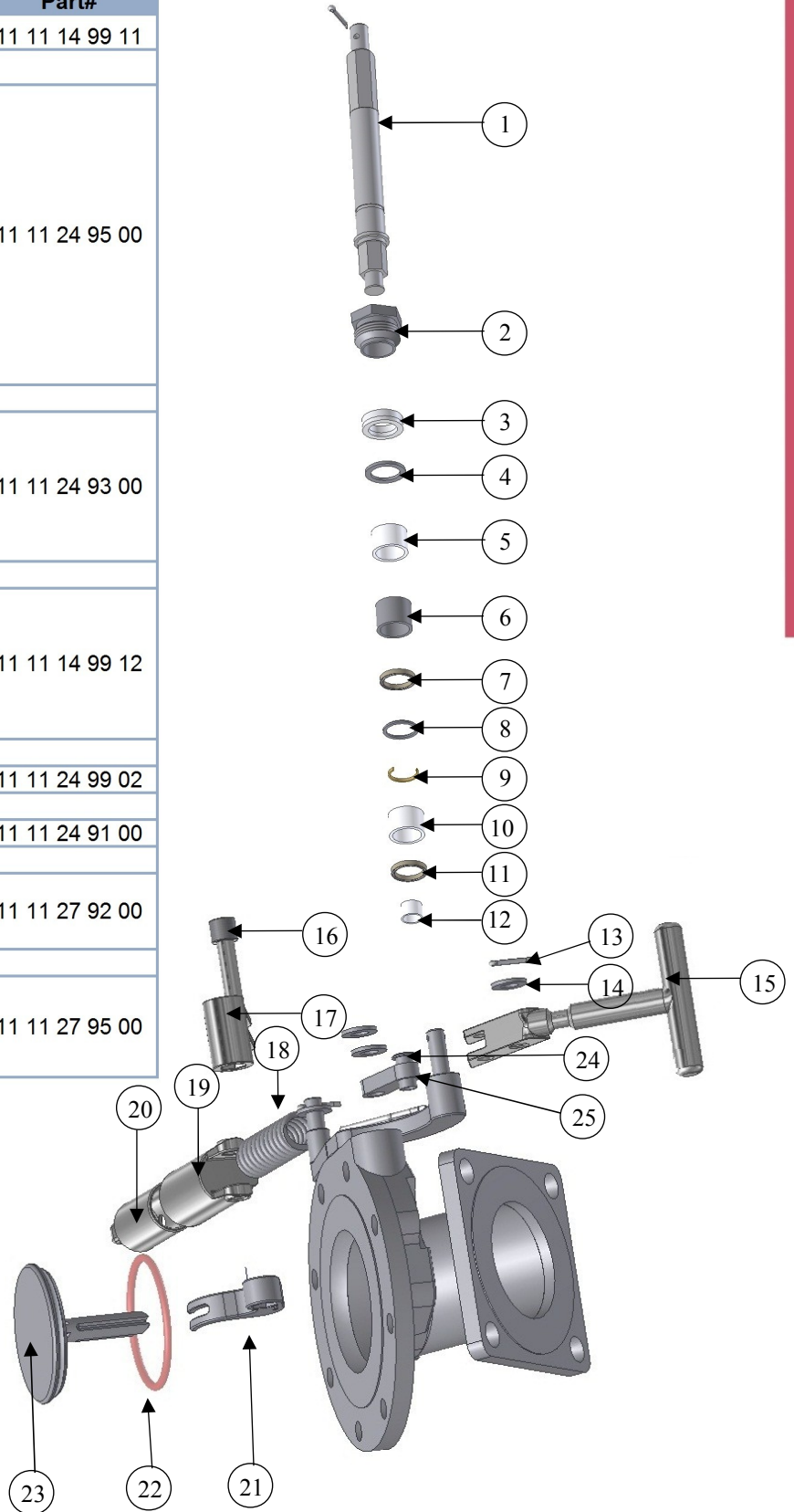


3" NEATFLOW™ MKII

Series NF3 External Spring Footvalve

Maintenance

Items	Description	Part#
1	Spindle kit (316L/1.4404)	11 11 14 99 11
Spindle seals kit including:		
2	Stuffing clamp (316L/1.4404)	11 11 24 95 00
3	Packing (PTFE/Graphite)	
4	Packing ring (316L/1.4404)	
5	Spindle bush (PTFE + 25% Glass)	
6	Spacer (316L/1.4404)	
7	Elastic gasket (Ekyonol & 316L/1.4404)	
8	Stop ring (316L/1.4404)	
9	Elastic ring (316L/1.4404)	
10	Spindle bush (PTFE + 25%glass)	
11	Elastic gasket (Ekyonol & 316L/1.4404)	
12	Spindle bush (PTFE+25% glass)	
Handle kit including :		
13	Split pin (316L/1.4404)	11 11 24 93 00
14	Washer (316L/1.4404)	
15	Handle (316L/1.4404)	
24	Roller Spindle (304L/1.4307)	
25	Connecting rod (316L/1.4404)	
MKII Spring System kit including :		
16	Removable shaft (316L/1.4404)	11 11 14 99 12
17	Drive yoke (316/1.4408)	
18	Spring (Stainless Steel)	
19	Female MKII case (316L/1.4409)	
20	Male MKII case (316L/1.4409)	
21	Cam kit (316L/1.4409)	11 11 24 99 02
22	Poppet seal kit (FEP/Silicone)	11 11 24 91 00
Poppet kit including :		
22	Poppet seal (FEP/Silicone)	11 11 27 92 00
23	Poppet (316L/1.4409)	
Poppet & Cam kit including :		
21	Cam (316L/1.4409)	11 11 27 95 00
22	Poppet seal (FEP/Silicone)	
23	Poppet (316L/1.4409)	



Bottom Discharge