

INSTALLATION - RMT3

Our recommendations before installing the remote control RMT3

- To open the valve : the cable must push the valve lever
- To close the valve : the cable must pull the valve lever
- For **RIGHT RMT** :
 The side of the RMT with the label must be facing the same direction as the valve lever. (Fig. 2)
- For **LEFT RMT** :
 The side of the RMT with the label must be facing the opposite direction as the valve lever. (Fig. 1)
- Check p7&8 of this document to reverse the opening sense of the remote control.

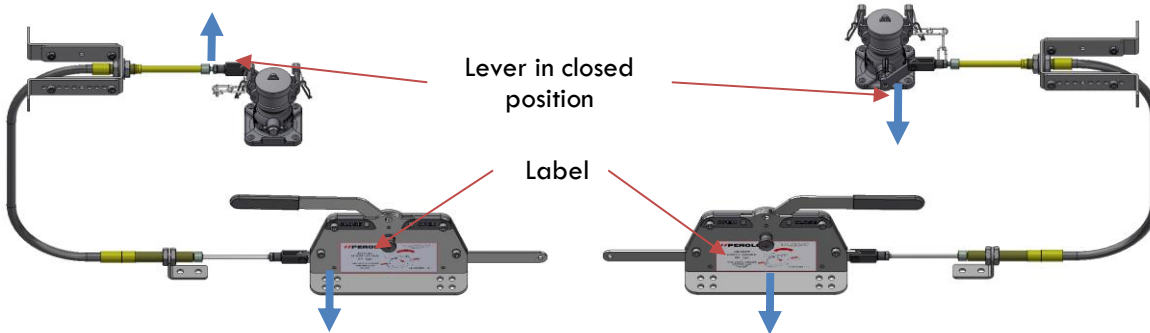


Figure 1 : Left version

Figure 2 : Right version

The remote control should be installed in 2 areas :

- the valve area (1)
- the remote control area (2)

following the **right (R)** or the **left (L)** version, detail of Fig. 3.

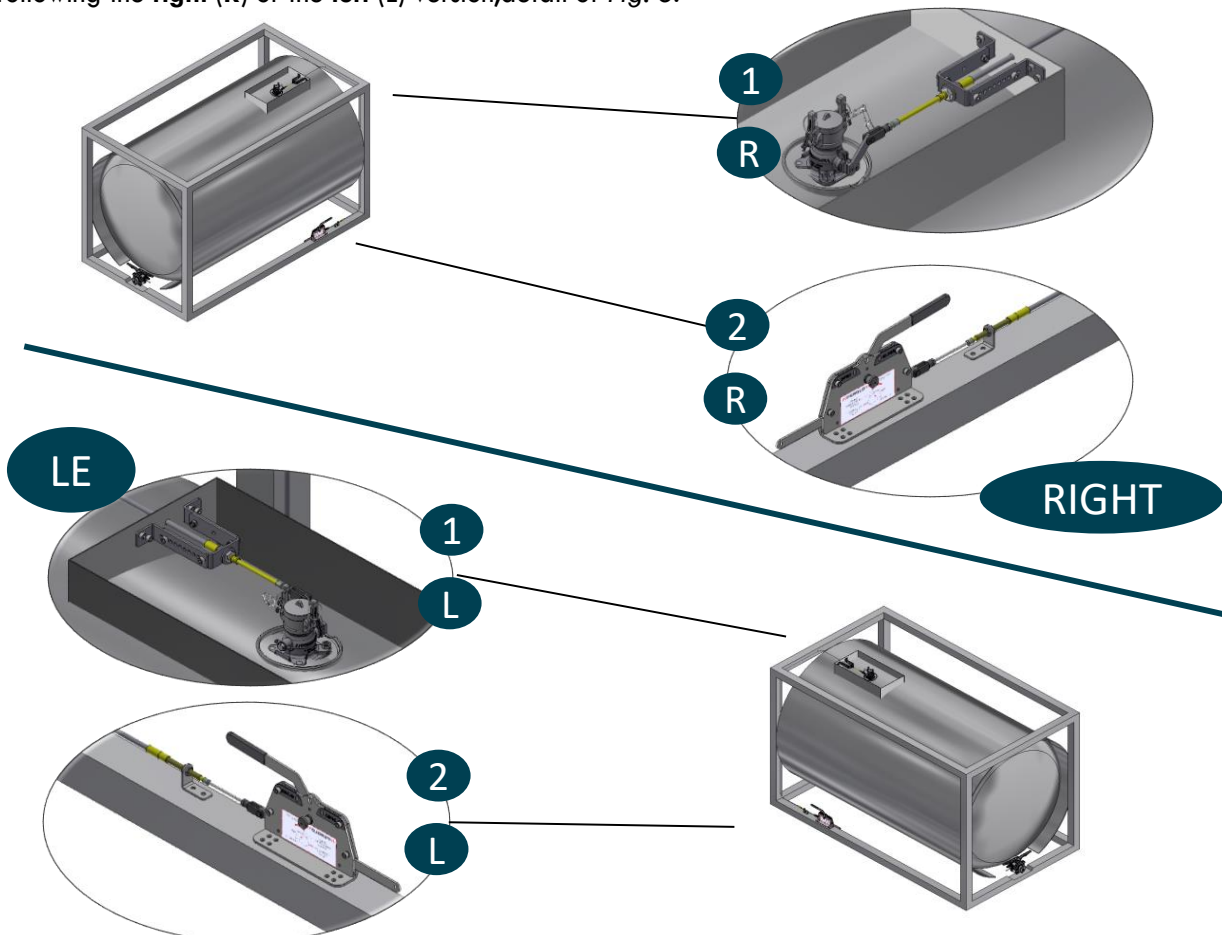


Figure. 3



1. Preparing the bracket of the valve

-Take the end of the cable with the articulation and shorter thread for the valve side Fig.4.

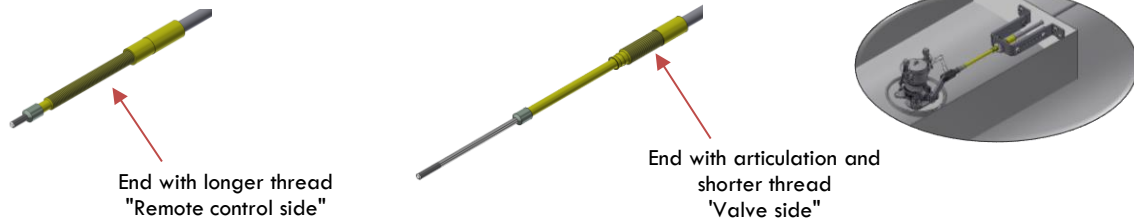


Figure 4

-Remove all the components at the end of the cable and place the bracket (B1) Fig.5 according to the dimension against the valve Fig. 5. The bracket can be set to attain the below conditions.

The value X :

- Closed position of the valve
- Cable pulled back in its sleeve
- Must be in the middle of the threaded section

The value Y :

- Must be aligned with the valve lever

The value Z :

- Must be in the middle height of the upper and lower position of the lever axle and the yoke (2)

For welding assembly :

- Mark all the holes (red and blue holes) and drill only the red hole for the cable ($\varnothing 24$)

For bolted assembly :

- Mark and drill all the holes (red ($\varnothing 24$) and blue ($\varnothing 10,5$) holes) for the cable and the bolts

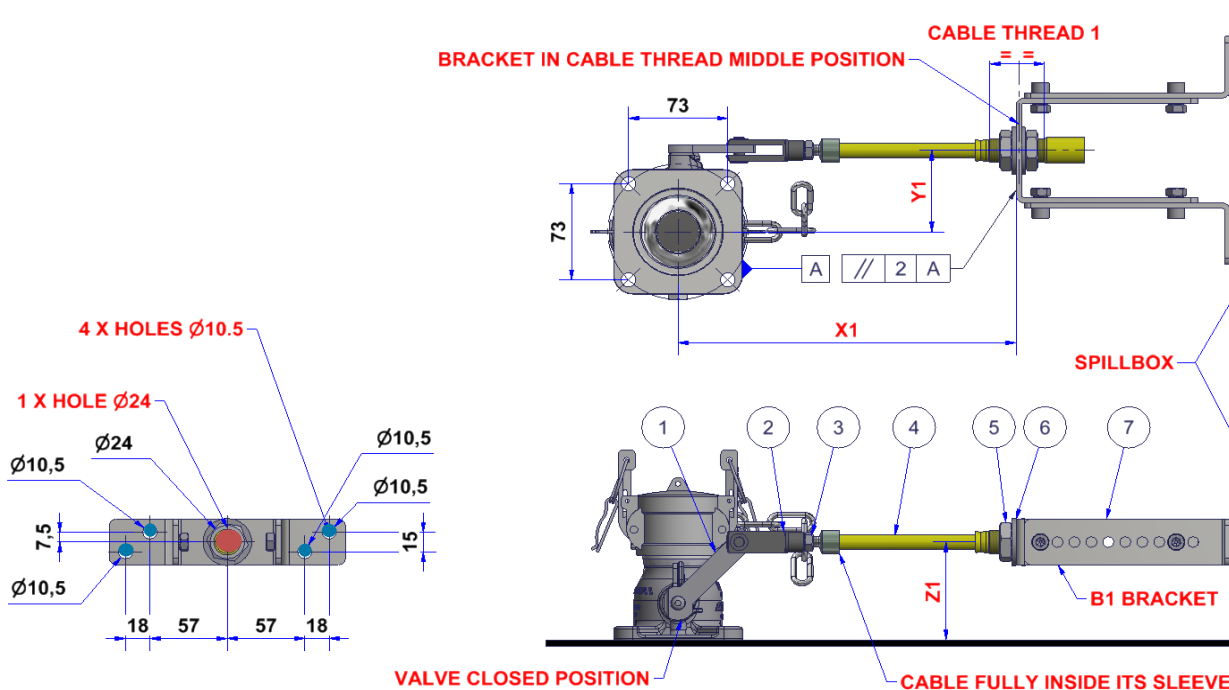
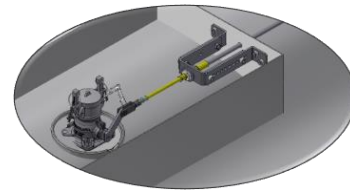


Figure 5





2. Fix and assemble valve on top of container

For welding assembly :

-With the marking, place and weld the bracket legs to the spillbox according the value X, Y, Z.

For bolted assembly :

-Assemble the bracket with a suitable nut, washers and bolts (M8) (not included in the RMT kit) Fig.6.

-Ensure the inner cable is pulled back so that the valve remains in closed position Fig. 7.

-Assemble the components according the Fig. 7 and Lock the yoke (3) to the valve lever (1) with its axis (2) Fig. 7.

-Keep a gap between both nuts (7A & 7B) and the bracket (8) before the next step.

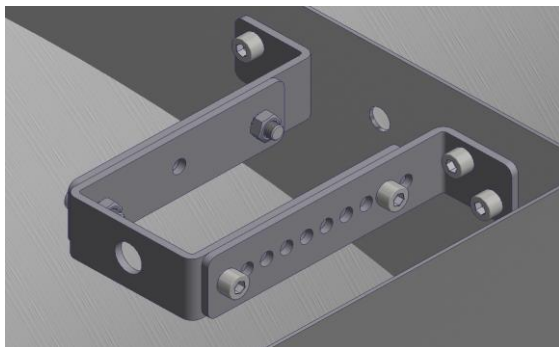


Figure 6

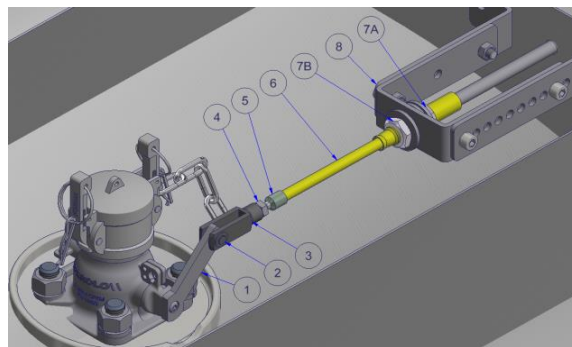
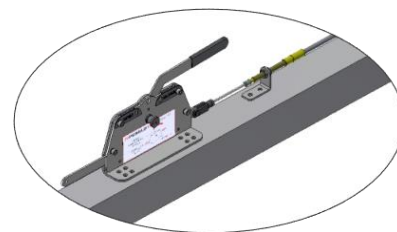


Figure 7

3. Preparing the remote control area on the tank frame

-Take the second end of cable, it must be the one with longer thread Fig. 8.



End with longer thread
 "Remote control side"



End with articulation and
 shorter thread
 "Valve side"

Figure 8

-Remove if necessary the components at the end before inserting the cable trough the sleeve (if there is one) along the frame work until the suitable position of the remote control Fig. 9. Check the distance of the cable before.

Caution : the number of 90° angles of the cable must be between 3 and 5.
 The minimum radius at the angle is : 100mm

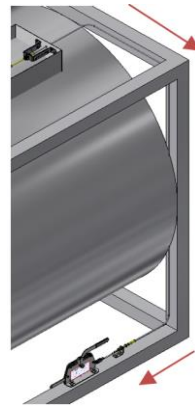


Figure 9

-Pull the cable until a mechanical stop. Place the bracket (B2) and the remote control along the horizontal frame work.. The bracket must be placed in the middle of the threaded section of the cable Fig. 10 & 11.
 -Once the bracket is approximately placed, the RMT must be aligned with the bracket according the Fig. 10 & 11.

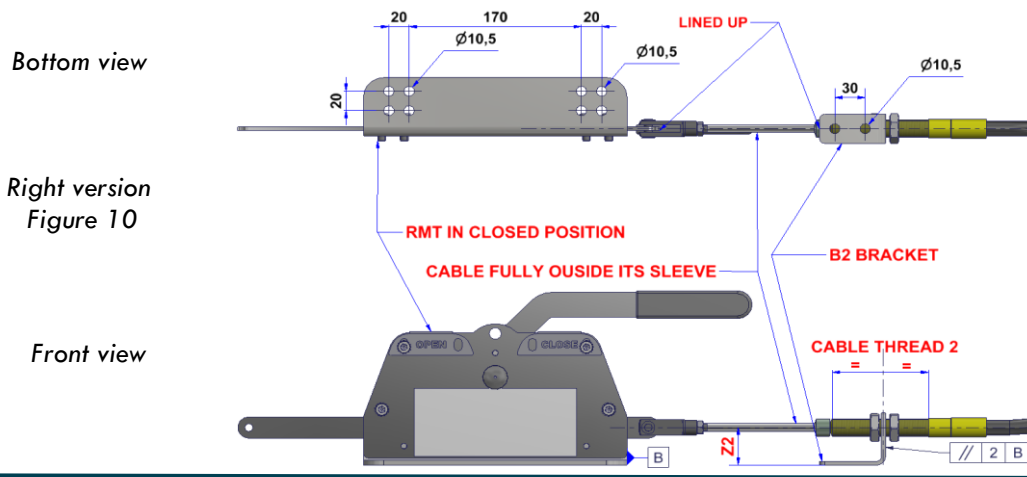
-Below the following assembly instructon:

For welding assembly :

-Mark all the holes and weld the bracket and the remote control to the frametank according the L or R version.

For bolted assembly :

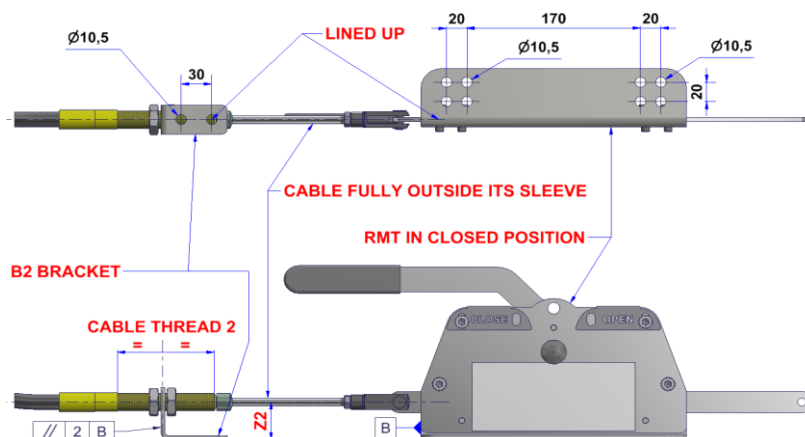
-Mark all the holes and drill a tap M8 of the bracket and the remote control to the frametank according the Fig. 10 & 11.



Bottom view

Right version
 Figure 10

Front view



Bottom view

Left version
 Figure 11

Front view

4. Fix and assemble the remote control area

-Once the bracket and the remote control mechanism are aligned correctly and in accordance with the dimensions and in the closed position Fig.11, follow the assembly instruction:

For welding assembly :

-Weld the bracket (B2) and the remote control to the framework according to the marking Fig. 11.

For bolted assembly :

-Bolt the bracket (B2) and the remote control to the framework according to the marking with a screw and washers (M8) (non-included in the RMT kit) Fig.10 & 11.

-Assemble and lock the yoke (15) to the valve lever with its axis (16) according the Fig. 12 & 13 and keep a gap between the nuts (11A and 11B) and the bracket (10), detail on Fig. 12 & 13 .

-Screw the nut (11A) until resistance and screw again (about 3 times) to have a tension in the cable.

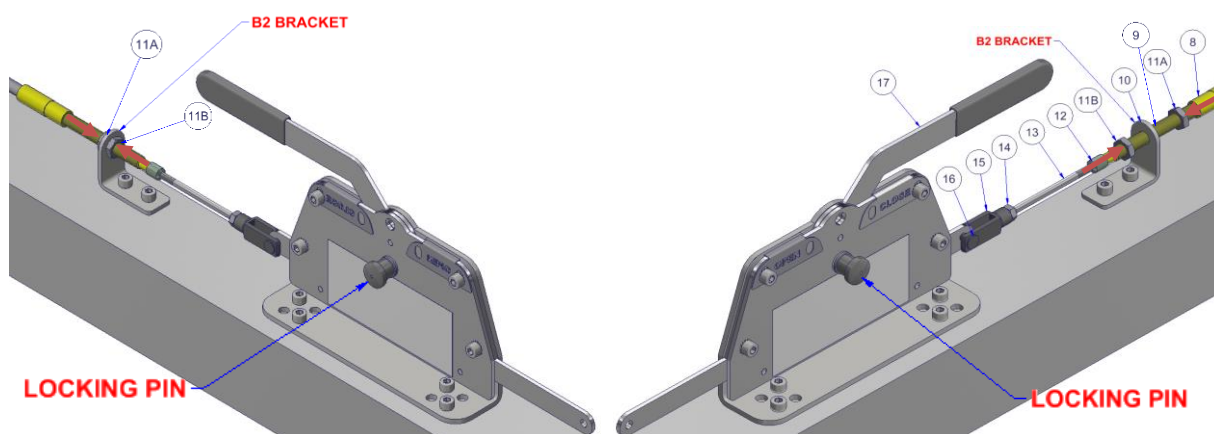
-Check the condition below for a proper assembly :

In order to open the index, you must apply light pressure to the handle of the remote control while pulling the locking pin towards you at the same time. *

-Lastly, screw the nut (11B) at 40N.m**.

** If not, screw again the nut (11A) until the previous condition.*

***if the system is subjected to too much vibrations apply LOCTITE 243 on the tread or contact us to order locking part.*



Left version - Figure 12

Right version - Figure 13

5. Setting the RMT in the valve area on top of container

-Go back on top of the tank to set the mechanism and ensure the RMT is in closed position and locked.

-Screw the nut (7A) until resistance and screw again (about 3 times) to have a tension in the cable.

-Check the condition for a proper assembly :

The lever must be in mechanical stop with the valve stop Fig.15.*

-Lastly, screw the nut (7B) at 40N.m**.

**If not, screw again the nut (7A) until the previous condition.*

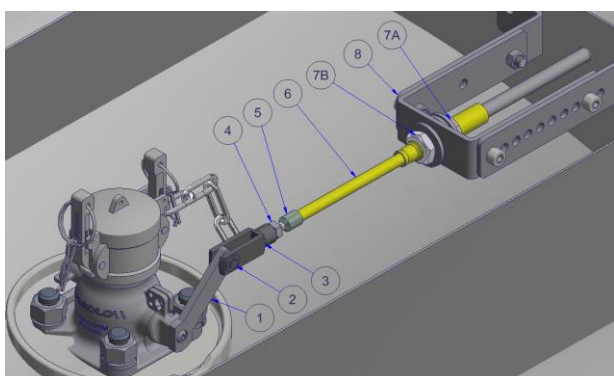


Figure 14

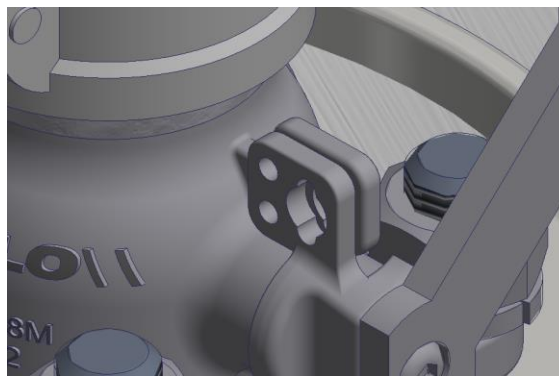


Figure 15

6. Check the open and close system.

To be sure the system is correctly installed, the below conditions must be fulfilled.

- 1 -when the RMT is in closed position, the lever of the valve must be in mechanical stop by the valve body.
- 2 -when the RMT is in open position and locked, the valve is correctly opened even if it is not fully open with a tolerance from 2° to 5°.



Figure 16
 RMT IN CLOSED POSITION

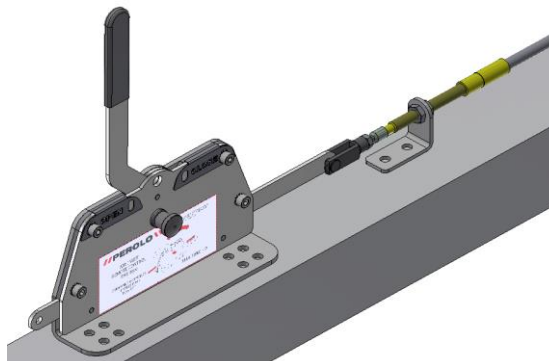


Figure 17
 RMT IN OPEN POSITION

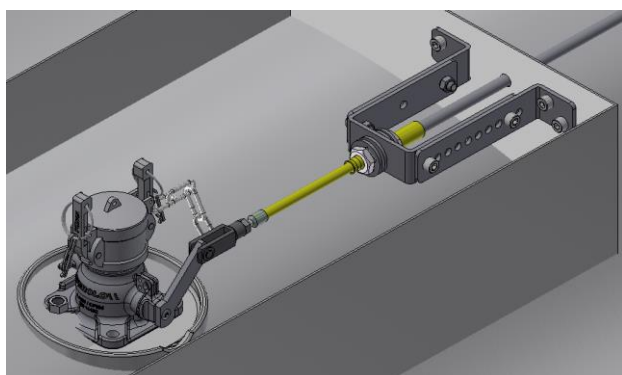


Figure 18
 VALVE IN CLOSED POSITION

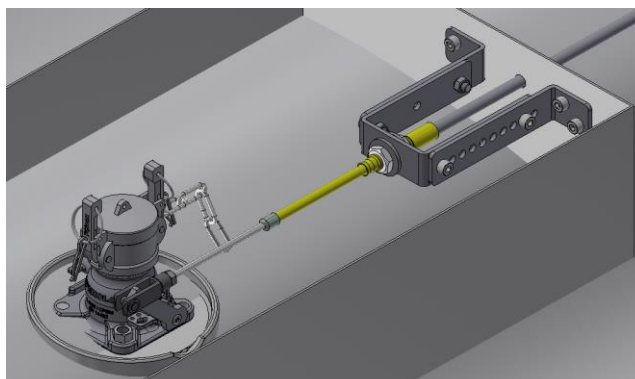


Figure 19
 VALVE IN OPEN POSITION

The basic installation conditions :

FROM CLOSED TO OPEN POSITION (from Fig. 16 & 18 to Fig 17 & 19)

- To open : You must apply light pressure to the handle of the remote control while pulling the locking pin towards you at the same time and pull the handle until the mechanical stop.
- During the operation: The cable must pull the valve lever for opening.
- The open position must be locked automatically by the locking pin and the valve must be open with a tolerance of 2° to 5°.

FROM OPEN TO CLOSED POSITION (from Fig. 17 & 19 to Flg. 16 & 18)

- To close : You must pull the locking pin towards you, and push handle until a mechanical stop.
- During the operation: The cable must pull the valve lever for closing
- The closed position must be locked automatically by the locking pin system.

CONTROL TORQUE :

Working torque : **22N.m**

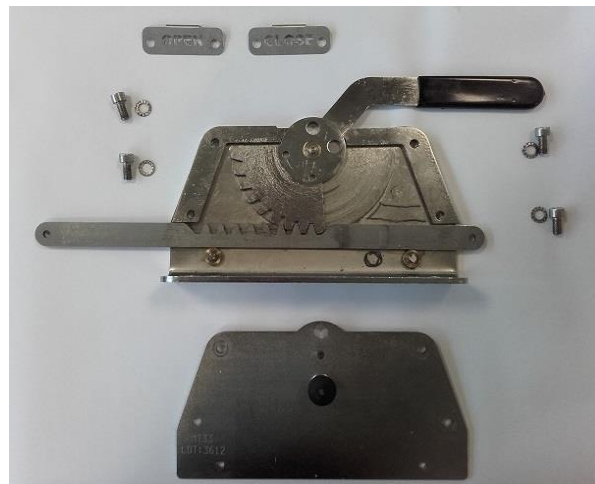
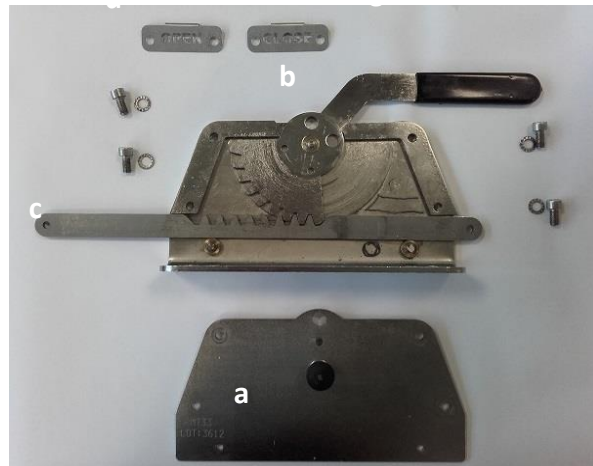
Maximum working torque : **33N.m**

REVERSE OPENING SENSE OF REMOTE CONTROL BOX

Passage de la position fermeture à droite à la position fermeture à gauche.
 Transition from the closed position on the right to the closed position on the left.



- a : Flasque avant / Front frame
- b : Levier à dents / Toothed lever
- c : Crémaillère / Rack
- d : Plaque open / Open plate
- e : Plaque close / Close plate



- 1 - Enlever les vis et les plaques.
- 1 - Remove the screws and plates.
- 2 - Enlever la flasque avant.
- 2 - Remove the front frame.



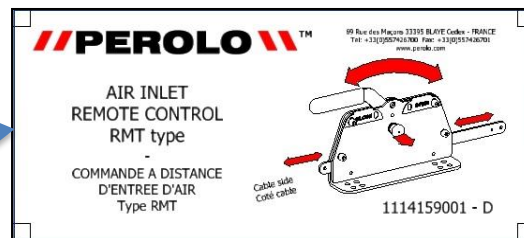
- 3 - Pousser la crémaillère sur la droite.
- 3 - Push the rack on the right.
- 4 - Retourner le levier et le placer à gauche, la première dent dans le premier creux.
- 4 - Flip the lever and place it on the left, the first tooth in the first hollow.



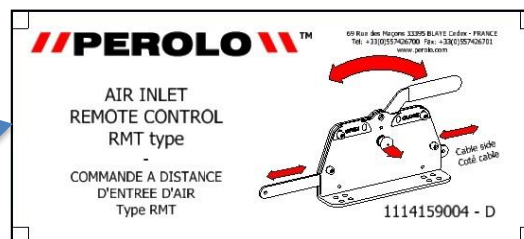
- 4 - Repositionner la flasque avant
- 4 - Reposition the front frame



- 5 - Placer les plaques : close à droite (e), open à gauche (d).
- 5 - Place the plates: close to the right (e), open to the left (d).
- 6 - Remettre en place les 4 vis.
- 6 - Replace the 4 screws



Autocollant levier à gauche : référence 11 14 15 90 01
Left lever sticker: reference 11 14 15 90 01



Autocollant levier à droite : référence 11 14 15 90 04
Right lever sticker: reference 11 14 15 90 04