

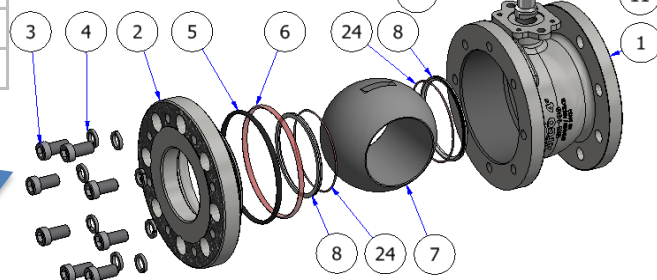
## MAINTENANCE



ITEM	QTY	DESIGNATION	PART N°	
			Standard	High Temp
<b>Ball seals kit: 11 14 21 90 00</b>			<b>on request</b>	
8	2	Ball seals (PTFE / PTFE/Graphite)	11 14 21 00 02	11 14 21 00 05
24	2 / 0	O'ring	70 10 17 00 36	/
6	1 / 2	O'ring (FEP / PFA/Silicone)	70 10 17 00 42	70 10 17 00 66
5	1 / 0	O'ring (Viton)	70 10 01 02 92	/
<b>Spindle seals kit: 11 12 52 93 00</b>			<b>on request</b>	
12	1	Bearing bush (PTFE)	11 12 52 00 09	11 12 52 00 27
11	1	O'ring (FEP encapsulated)	70 10 15 00 91	70 10 17 00 60
10	1	Spindle seal (PTFE)	11 12 52 00 10	11 12 52 00 10
<b>Ball kit:</b>				
7	1	Solid ball (stainless steel)	11 14 21 00 01	
7	1	Hollow ball (stainless steel)	11 14 21 00 04	
<b>Spindle kit: 11 12 71 95 00</b>				
9	1	Spindle (stainless steel)	11 12 52 00 24	
13	2	Washer (stainless steel)	-	
14	2	Elastic washer (stainless steel)	-	
15	2	Nuts (stainless steel)	-	
16	1	Stop washer (stainless steel)	-	
20	1	Washer (stainless steel)	-	
<b>Bolting:</b>				
19	3	Screw, (stainless steel)	70 13 01 37 15	
22	3	Washer, (stainless steel)	70 13 26 37 18	
23	1	Stop pin sealing (stainless steel)	11 14 21 93 00	
<b>Handle kit: 11 12 71 97 00</b>				
17	1	Handle (stainless steel)	11 12 52 00 20	
	1	Handle cap, nitrile	-	
15	2	Nuts (stainless steel)	-	
16	1	Stop washer (stainless steel)	-	
<b>Clamping ring kit (stainless steel): 11 14 21 91 00</b>				
2	1	Clamping ring (stainless steel)	11 14 21 00 03	
2	N/A	Clamping ring (carbon steel)*	19 14 01 00 03	
4	8	Washers (stainless steel)	70 13 26 37 02	
3	8	Screws M16 (stainless st.)	70 13 01 37 34	
<b>Tools kit:</b>				
A	1	Spindle assembly tool	11 14 21 97 01	
B	1	O'ring assembly tool	11 12 71 93 02	

\*Carbon st clamping ring kit on request (not included in st st kit)

tightening torque 120 N.m. +/-5



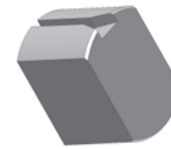
Material of the parts are indicated for Stainless Steel Version.

It may vary in HALAR Coated version. Please refer to HIGH CORROSION Catalogue for more details

**Nb: Perolo recommends**

- the spindle seals should be changed simultaneously to maintain the ball valve spindle perfectly tight.
- both ball gaskets should be changed simultaneously
- when clamping ring is changed we recommend to also order ball seals kit

A



B

