

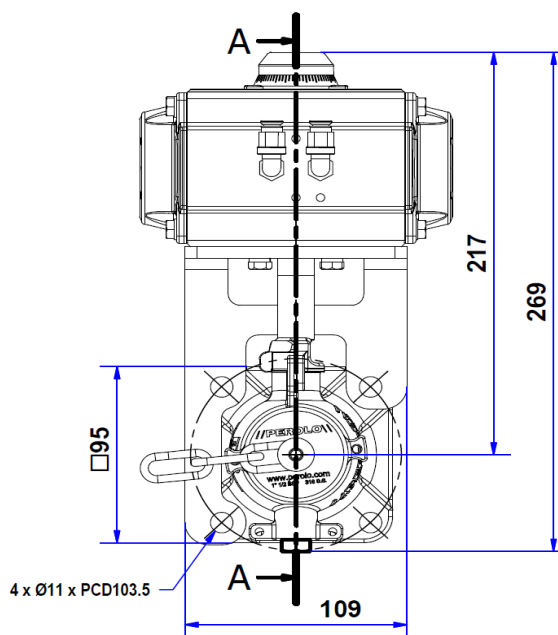
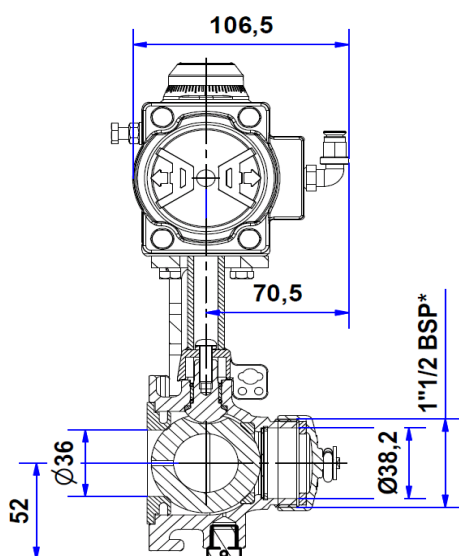
INSTALLATION



Caution: Do not disassemble the actuator from ATCO Ball valve.
 For better and long time performances, assembly and settings are realized in PEROLO factory.

CONDITIONS

- Minimum operating pressure: 4 bar (Maximum operating pressure: 8bar)
- Actuator connections: Ø6mm ext
- Actuator Working Temperature: -40°C to 80°C
- For corrosive products application, provide a protection to avoid contact with actuator



INSTALLATION ON THE TANK

- Align holes in gasket to screws (screw kit: 11 14 51 90 00). The valve must be fully open or closed.
- Fit ball valve onto tank pad and secure with washers and nuts. The required tightening torque is 30 N.m.
- Lubricate threads with PTFE added grease
- Cross tight the 4 screws 1-2-3-4
- Check torque after 24H
- Adjust at 3 diaNm if required

if a piping system linked to the tank is installed on the process side of the valve, we recommend to have a flexible hose in-between the valve and the piping system to avoid any additional stress on the fastening studs

SETTING UP THE ACTUATOR

- Connect inlet to connection 2 and outlet to connection 4.
- It is a simple effect actuator able to work with only one inlet connection. However, we recommend to use two inlet connections. It reduces the time of closure. Use lubricated air to keep the actuator in good working condition. The air feeding should be rated from 5.5 bar up to 6.5 bar (do not exceed 8 bar).