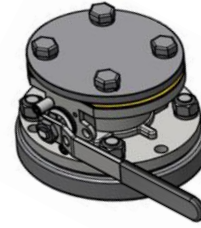


INSTALLATION

To use the ND50 ATCO™ full bore as an air inlet/outlet:

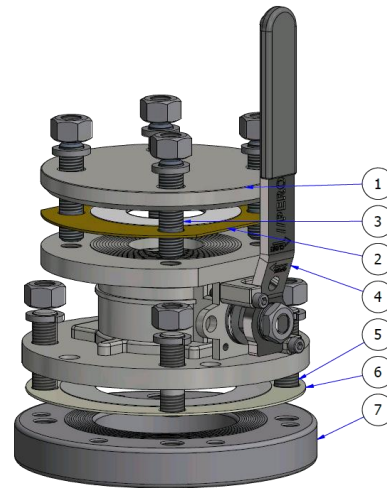
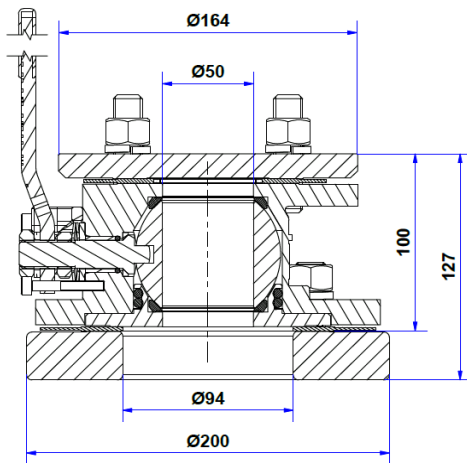
1. Ensure that the Inlet (tank side) flange is clean; free from dirt and grit.
2. Screw the studs into the weld in flange (1).
3. Place the gasket (2) in the middle of the studs (3).
4. Fit ball valve on the weld in flange and secure with washers and nuts.



The required tightening torque is 50 N.m +/-5. Please check PWAGEN001 for more details.

5. Assemble gasket and blind flange on the top and secure using bolting kit.

**if a piping system linked to the tank is installed on the process side of the valve, we recommend to have a flexible hose in-between the valve and the piping system to avoid any additional stress on the fastening studs**



ITEM	DESCRIPTION	SPECIFICATION	PART N°
1	Blind flange	Ext Ø 165mm, thickness 13.5mm, drilling: 4 x Ø18.5 x 125 PCD, 316L/1.4404 st st	11 95 88 00 00
3	Bolting Kit	4 x M16-50 studs, 4 x nuts, 4 x washers	17 12 12 91 00
2	Gasket	Ext Ø 165mm, int Ø 50mm, thickness 2mm, drilling: 4 x 18 x 125 PCD, PTFE	11 90 29 00 00
4	ND 50/80 ATCO	Inlet 3" Outlet 2" Ball valve	AHN5X16T120 0000
5	Stud Kit	4 x M16 36/28 studs, 4 x nuts, 4 x washers	11 12 82 93 00
6	Gasket	Ext Ø 185mm, int Ø 94mm, thickness 2.5mm, drilling: 4 x holes Ø18 x 160 PCD, CNAF/PTFE	12 91 40 00 00
7	Weld-in flange	Ext Ø 200mm, int Ø 94mm, thickness 27mm, drilling: 4 x M16 x 160 PCD & 6 x M12 x 168 PCD, 316L stainless steel	11 90 36 00 00

Due to our policy of continuous product improvement, specifications may change without notice - Installation sheet PWA 11 17 07 30 00 D

Perolo warranty is null and void in case of fitting non OEMparts

It is the customer's responsibility to check the compatibility between valves material and transported product.

PEROLO SAS, 69 Rue des Maçons, 33390 Blaye, FRANCE -Phone : + 33 (0)5 5742 67 00 - Email : sales@perolo.com